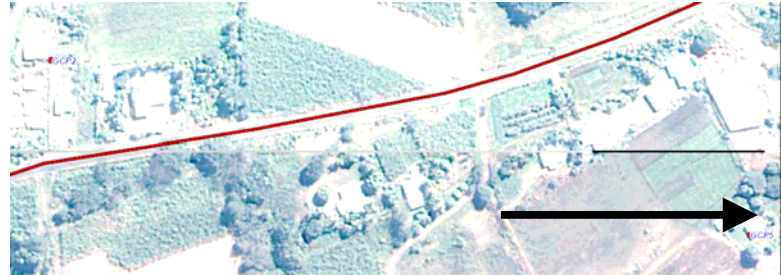
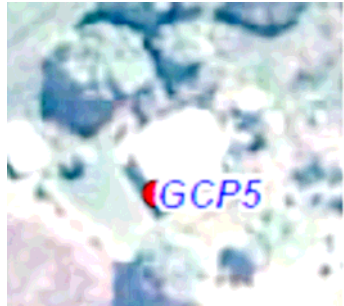


Reference Point 5, Roof Corner of house in Tuvu.



Reference Image Point 5 is 500 meters from Reference Image 2. The access to the point is a vehicle road on the east of the Kings Road. The house is on the eastern side of the vehicle road. The exact location of the point is on the south western corner of the house roof.

Coordinates:

X_Coordinate: **177°31'52.59086"E**

Y_Coordinate: **17°31'58.52348"S**

Z_Coordinate: **76.956 m** (Height Above Ellipsoid) level of tripod feet

UTM Coordinates WGS84 Zone 60S:

X_Coordinate: **560736.487 m**

Y_Coordinate: **8064313.081 m**

Measurement time:

Start: 23/03/2009 17:06:41

End: 23/03/2009 17:36:36

Duration: 00:29:50

Base Station: Tawarau Base Station Point.

Base Line Report: RIP5.pdf