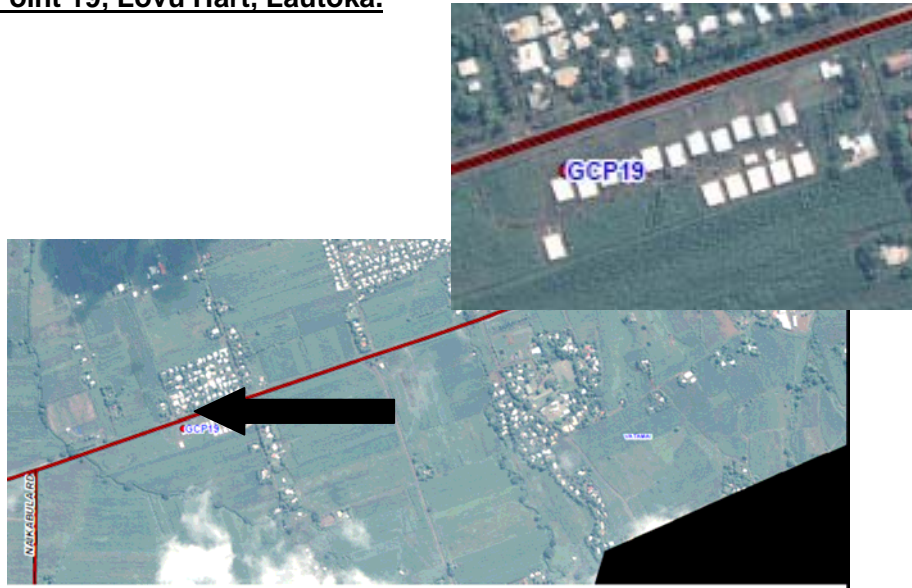


Reference Point 19, Lovu Hart, Lautoka.



The reference point¹ is located in the HART (Housing Assistance Relief Trust) Community in Lovu which is south east of Lautoka City. The point is located on the north western corner of the roof. The HART Community is located on the western side of the Kings road.

Coordinates:

X_Coordinate: **177°28'35.59989"E**

Y_Coordinate: **17°36'19.20350"S**

Z_Coordinate: **65.276 m** (Height Above Ellipsoid) level of tripod feet

UTM Coordinates WGS84 Zone 60S:

X_Coordinate: **548304.543 m**

Y_Coordinate: **8051842.473 m**

Measurement time:

Start: 19/03/2009 16:41:16

End: 19/03/2009 17:11:06

Duration: 00:29:50

Base Station: Simla Water Tank Lautoka.

Base Line Report: RIP19.pdf

¹ There were not enough poles to elevate the rover antennae way past the roof. There is a high chance of multipath interference and therefore the average position for this point can be compromised