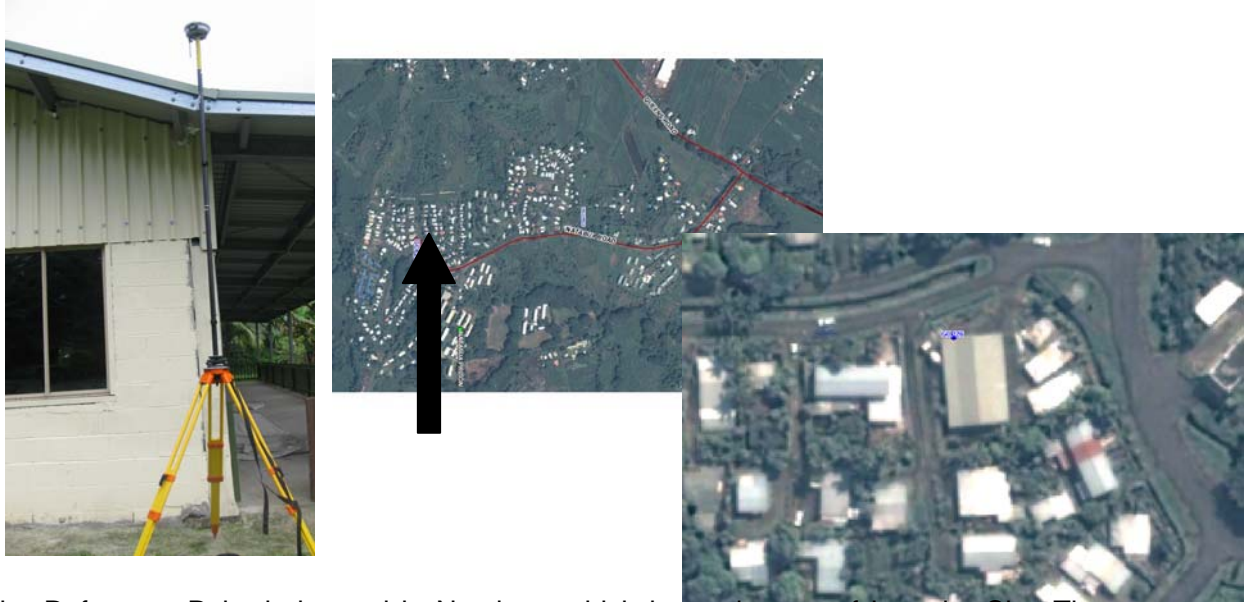


**Reference Point 26, Roof Corner of Adventist Church, Natabua Road.**



The Reference Point is located in Natabua, which is south west of Lautoka City. The exact point location is the north western corner of the Adventist Church Building. The Church is located on the eastern side of the Road.

Coordinates:

X\_Coordinate: **177°23'35.27725"E**

Y\_Coordinate: **17°40'50.85458"S**

Z\_Coordinate: **76.243 m** (Height Above Ellipsoid) level of tripod feet

UTM Coordinates WGS84 Zone 60S:

X\_Coordinate: **548304.543 m**

Y\_Coordinate: **8051842.473 m**

Measurement time:

Start: 19/03/2009 12:36:21

End: 19/03/2009 13:06:16

Duration: 00:29:55

Base Station: SIMLA Water Tank

Base Line Report: RIP26.pdf